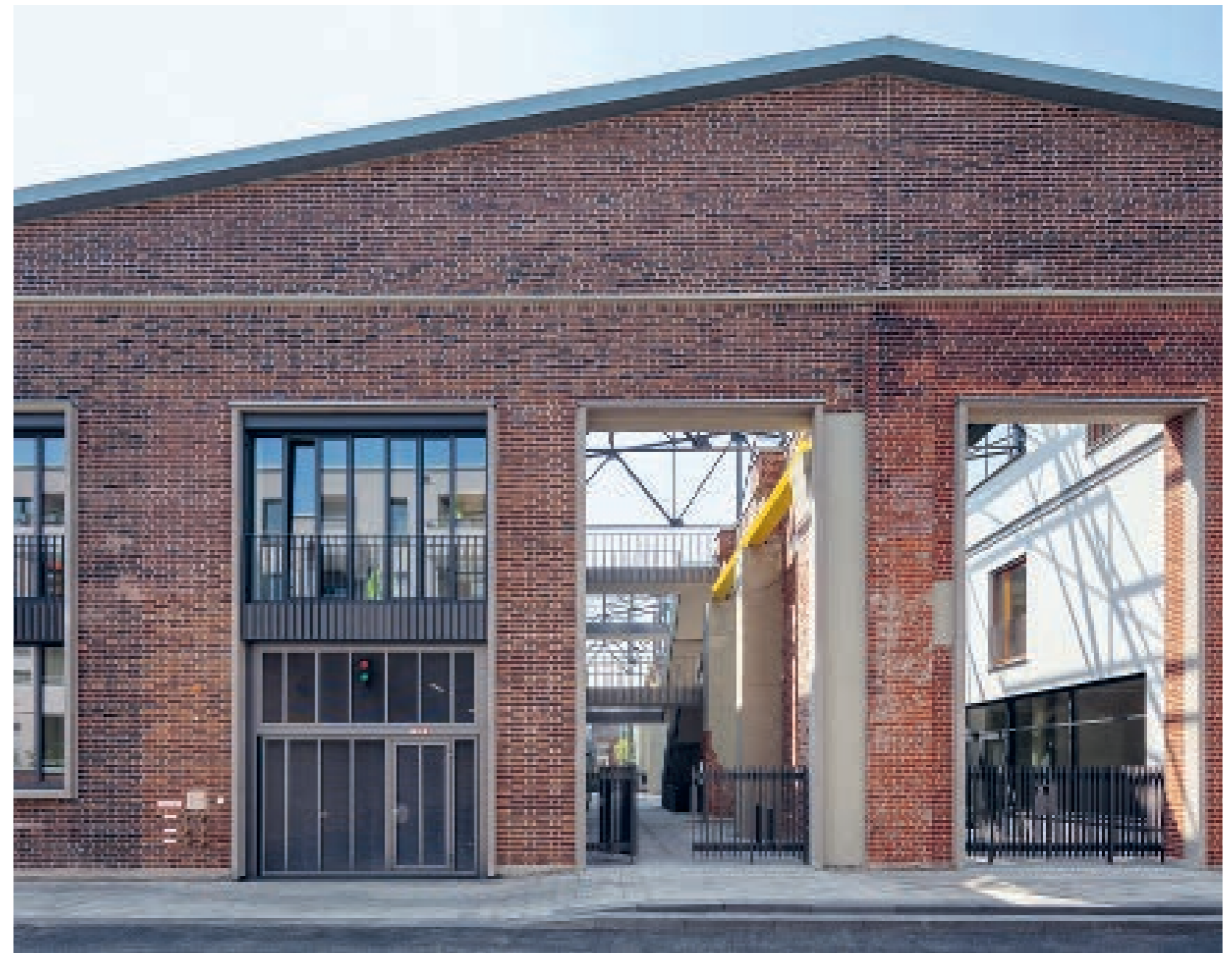


1928 → 2018

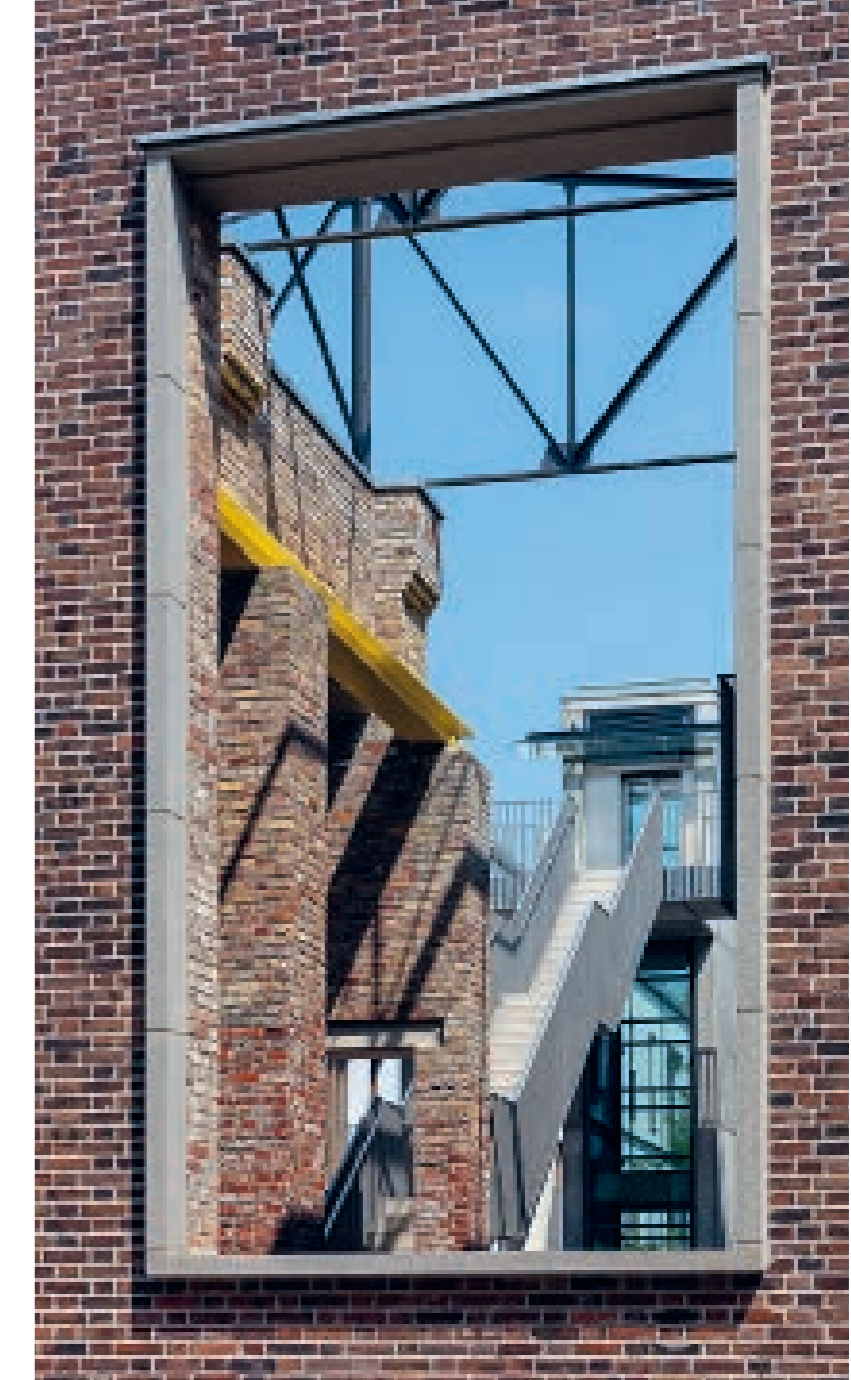
This design
breathes
new life into
Halle 17.



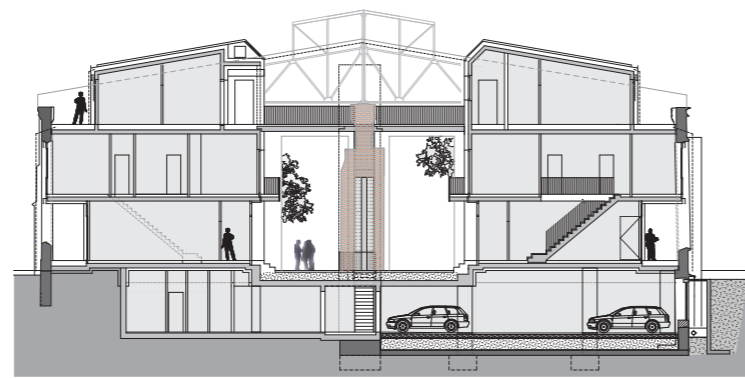
The new Clouth quarter is located in Nippes, a lively city quarter on the edge of Cologne's inner city. The listed building Halle 17, commissioned by Instone Real Estate, graces the centrally located Luftschiffplatz. The 125-meter-long and 35-meter-wide former production hall is a monument to 19th-century Rhenisch industrial culture and forms the backbone of urban city planning for this area. This project involved the creation of a flexible program of apartments, commercial units and restaurants. A key focus of the design was the preservation of the brick façade and part of the historical steel lattice formwork. Two access points connect Halle 17 with the adjacent streets and Luftschiffplatz, thus structuring the building interior into six segments. The northerly part of the building houses a toy workshop for children, restaurants and apartments, while the other segments house larger apartments which offer space for both working and living.



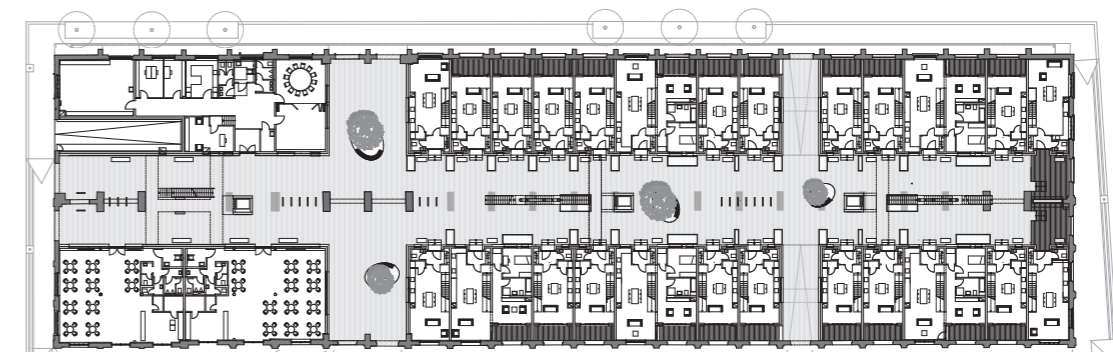
Architect Jürgensen & Jürgensen Architekten **Completion** 2018 **Original building** Industrial building, 1928 **Gross floor area before** 6,500 m² **Gross floor area after** 15,272 m² **Number of apartments** 47 **Number of residents** Approx. 150 **Address** Luftschiffplatz 1–66, 50733 Cologne, Germany



A witness to Cologne's historical roots, this industrial shell wraps around modern residential units.



Section



Floor plan whole complex